

KENDRION SOLUTIONS

Secure door locking for modern buildings

Locking systems for automatic doors

The reliable locking of automatic doors is an important aspect of the security concept of modern buildings. By using electromagnetic locking systems, you have the possibility of centrally controlling various doors and thus reacting flexibly to the requirements of the environment.

In this case, our powerful square linear solenoid LHP035 is used, which is characterised by an optimal installation space/force ratio. The interface to the customer-specific locking unit is easy to adapt here and can also be used for special solutions.

The units meet the highest quality standards and are designed for durability. Nevertheless, the design has been optimised for ease of maintenance. The electrical connection is made via a plug so that the maintenance

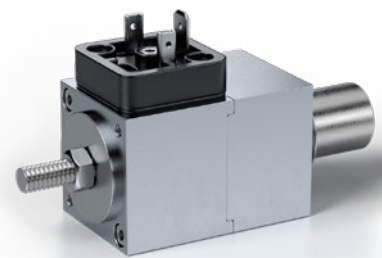
technician can replace faulty components quickly and easily.

Product features

- high reliability
- fast switching
- continuous operation possible
- high forces (with low duty cycle)
- integrated reset

Other examples of use

- automation technology
- railway technology
- power engineering
- intralogistics



Kendrion (Donauesschingen/Engelswies) GmbH

August-Fischbach-Strasse 1
78166 Donauesschingen
Germany

T +49 771 8009-3770
sales-ims@kendrion.com
www.kendrion.com

113/'21

